



St. Joseph the Worker School

COMMUNICABLE DISEASE PLAN

Updated SEPTEMBER 2025

September 2025

St. Joseph the Worker School supports students in developing their potential and acquiring the knowledge, skills and abilities they need for lifelong success. In-person learning, is a part of a student's education, provides the opportunity for peer engagement, which supports social and emotional development as well as overall wellness. It also provides many students access to programs and services that are integral to their overall health and well-being.

Based on guidance from the BC Centre for Disease Control and experience to date within B.C. and other jurisdictions showing schools as low-risk sites for COVID-19 transmission, even with increased risk of COVID-19 in some communities, K-12 students can participate in full-time, in-class instruction in accordance with current public health guidelines for schools.

This Communicable Disease Plan for **St. Joseph the Worker School** was created in consultation with the CISVA Superintendent's Office, the CISVA, administrators, teachers, support staff, PEC members, and custodial staff. The guidelines contained herein are intended to support St. Joe's staff, students, parents, caregivers, administrators, and community members to:

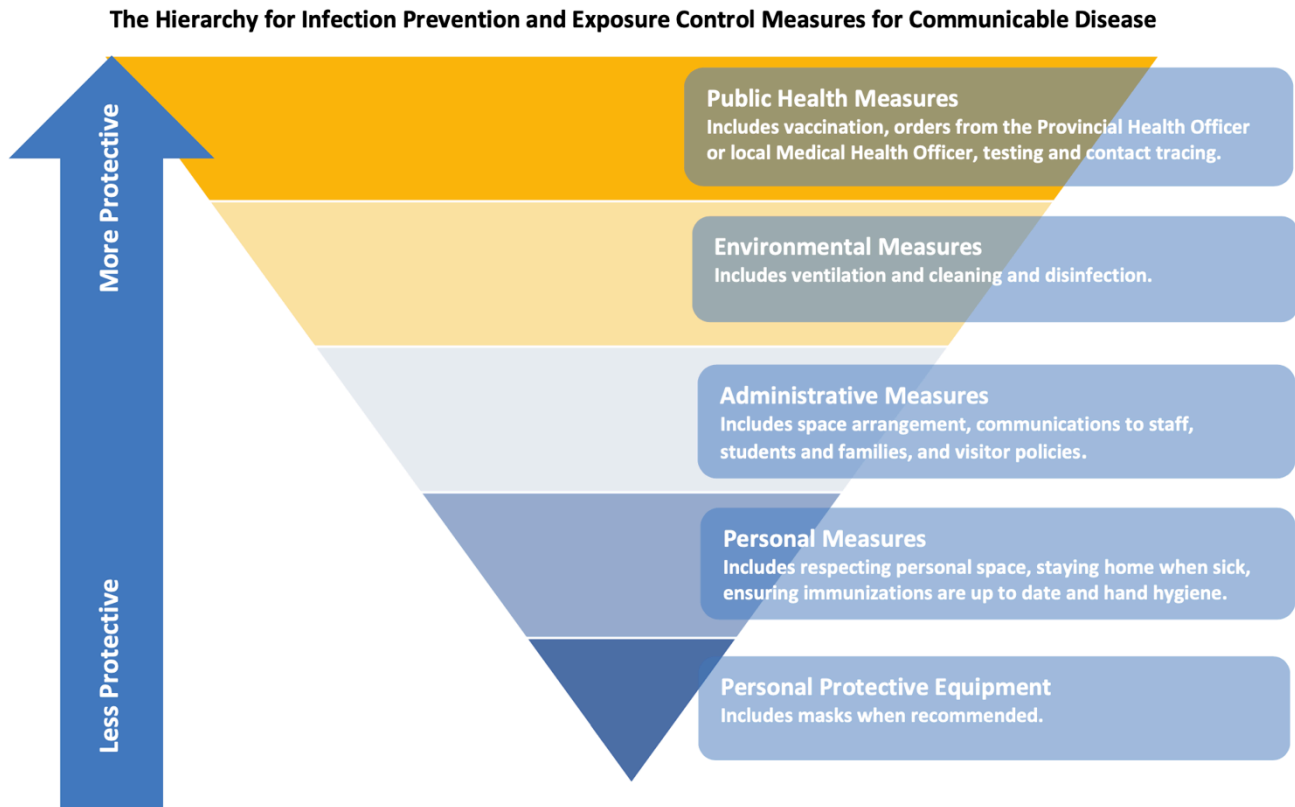
- Be informed about communicable disease measures at St. Joseph the Worker School and how they support a safe school environment.
- Understand their roles and responsibilities in maintaining and promoting a safe and healthy school.

This document was created with guidance from the following documents:

[BCCDC COVID-19 Public Health Communicable Disease Guidance for K-12 Schools](#)

STEP 1: UNDERSTAND THE RISK

Preventing communicable disease involves taking ongoing measures to reduce the risk for communicable disease transmission in school. Additional measures will be implemented when advised to do so by Public Health during periods of elevated risk. The level of risk of certain communicable diseases, including COVID-19, may increase from time to time or on a seasonal basis.



- The school principal is responsible for regularly monitoring and reviewing the communicable disease-related information that is provided by our regional medical health officer (Vancouver Coastal) and the Provincial Health Officer. This includes all of the orders, guidelines, notices, and recommendations that are issued by them. In addition, we follow the guidelines that are provided by our Superintendent. This information is regularly communicated to staff to understand and minimize risk for communicable disease transmission in our school.

STEP 2: IMPLEMENT MEASURES, PRACTICES, AND POLICIES TO REDUCE THE RISK

Ongoing measures – maintain at all times: Implement policies to support staff who have symptoms of communicable disease so they can avoid being in the workplace when sick.

- All students, staff and visitors to the school must perform a daily health check prior to entering the school building.
- Policies are implemented to support staff who have symptoms of communicable disease so they can avoid being in the workplace when sick. This includes Policy 310 and Employee Leaves of Absence.

- A student absentee policy and a section on “when your child is sick” is also available in St. Joseph the Worker Parent Handbook.
- Additional considerations may be implemented by the principal, PEC, health and safety committee, priest, etc.
- Said policies are reviewed regularly in staff meetings. Staff, students, and parents are trained in school policies and procedures.
- Measures are in place, where feasible, to minimize the crowding and to use all space available to spread people out.
- The decision to wear a mask or face covering is a personal choice and should be supported and treated with respect.
- Whole school recess and lunch recess will continue.
- School assemblies and school masses will be held in person and students will be spread out to maximize space.
- Morning soft start will continue.
- Students taken outside as often as possible, weather permitting.
- Extra-curricular activities including sports will continue according to the guidelines set from the CISVA Elementary Athletic Commission
- Field Trips are permitted with the appropriate safety measures in place.
- Parents are welcome to attend school events in person. This will be detailed in the school newsletter and/or by communication from the principal.
- Visitors will be permitted in the school. Visitors will be aware of communicable disease protocols and requirements, and will ensure that they have completed the daily health check prior to entering the school. Routine sign in/out practices for visitors and staff not typically onsite will be followed.

Provide hand-hygiene facilities and appropriate supplies. Use policies and signage to remind workers to wash their hands and to cover coughs and sneezes.

Handwashing:

Wash hands with plain soap and water for at least 20 seconds. Antibacterial soap is not needed.

- If sinks are not available (e.g., students and staff are outdoors), use alcohol-based hand rub containing at least 60% alcohol.
 - If hands are visibly soiled, alcohol-based hand rub may not be effective at eliminating respiratory viruses. Soap and water are preferred when hands are visibly dirty.
 - Incorporate additional hand hygiene opportunities into the daily schedule.
- Staff have posted [handwashing posters](#) by the classroom sinks and administration has posted posters in all bathrooms and above staff room and kitchen sinks.

When Students Should Perform Hand Hygiene:	When Staff Should Perform Hand Hygiene:
<ul style="list-style-type: none"> • When they arrive at school. • Before and after any breaks (e.g., recess, lunch). • Before and after eating and drinking (excluding drinks kept at a student's desk or locker). • Before and after using an indoor learning space used by multiple classes (e.g. the gym, music room, science lab, etc.). • After using the toilet. • After sneezing or coughing into hands. • Whenever hands are visibly dirty. 	<ul style="list-style-type: none"> • When they arrive at school. • Before and after any breaks (e.g. recess, lunch). • Before and after eating and drinking. • Before and after handling food or assisting students with eating. • Before and after giving medication to a student or self. • After using the toilet. • After contact with body fluids (i.e., runny noses, spit, vomit, blood). • After cleaning tasks. • After removing gloves. • After handling garbage. • Whenever hands are visibly dirty.

Respiratory Etiquette:

Students and staff should:

- Cough or sneeze into their elbow sleeve or a tissue.
- Throw away used tissues and immediately perform hand hygiene.
- Refrain from touching their eyes, nose or mouth with unwashed hands.
- Refrain from sharing any food, drinks, unwashed utensils, cigarettes, or vaping devices.
- Parents and staff can teach and reinforce these practices amongst students.

Staff are encouraged to teach and reinforce both handwashing and respiratory etiquette regularly throughout the day

Teachers have posted posters in all classrooms. Administrators have posted in public areas.
[Respiratory Etiquette Poster](#)

Maintain a Clean Environment through routine cleaning processes that are appropriate for school practices.

Cleaning Practices:

- We have reviewed the information on cleaning and disinfecting surfaces. Cleaning supplies are provided for every classroom and common room.
- Our school has enough handwashing facilities on site for all our staff and students.
- We have policies that specify when staff and students must wash their hands and we have communicated good hygiene practices to parents, students and staff. Instructional posters are posted in each classroom, washroom, and common room.
- We have implemented cleaning protocols for all common areas and surfaces
- Workers who are cleaning have adequate training and materials.
- Hygiene Posters are posted in all classrooms and common area
- Cleaning staff are provided with substances for cleaning and disinfecting.
- Cleaning staff are provided with gloves.
- Cleaning staff have been instructed to wash their hands after cleaning.
- Custodial staff will clean at the end of each school day
- Frequently touched surfaces are disinfected (doorknobs, light switches, toilet handles, faucets, cabinet handles, tables, desks, chairs, keyboards, communication devices)
- Custodial staff will clean high touch surfaces.
- Use commercial-grade cleaning products and follow the label.
- All cleaning products must be kept out of reach of their students.
- There is no evidence that the virus can be spread by paper products. Paper and paper-covered books can be given to students. Students can submit paper assignments to teachers.
- Our School Custodial Team will empty garbage once a day
- Staff will wear disposable gloves when cleaning blood or body fluids (e.g., runny nose, vomit, stool, urine). Wash hands before wearing and after removing gloves.
- To decrease high touch surfaces, internal doors are kept open when possible and appropriate.
- Clean the vinyl surface of the cot after the use of each student.
- **Student supplies and equipment: Parents must label all personal items coming from home including water bottles, lunch kits and containers, backpacks, clothing and all school supplies. Students are encouraged to bring labeled water bottles to school.**

Ventilation, Air Circulation, and Masks:

- Windows are opened in all classrooms and staff areas each day, weather permitting, to ensure effective air circulation.
- We understand the limitations of masks to protect the wearer from respiratory droplets.
- We have trained workers on the proper use of masks
- Masks are optional. The decision to wear a mask or face covering is a personal decision and is to be supported and respected.
- We will continue to have non-medical masks available at school for those who forget theirs and would like to wear one or for those who become ill at school.

Additional Measures if/when Needed

When a medical or provincial health officer provides guidance/new information about a risk or how to reduce it, our health and safety team will be contacted, assembled, and meet with administration/health officials to discuss risk and establish plans and steps for response and implementation.

Depending on the severity of risk, formal meetings with stakeholder groups will be conducted. Consultation with the Superintendent's office will occur as needed. Plans will be documented.

If needed, a report will be created to outline strategies for additional measures. Reporting out will occur with stakeholders: PEC, staff, parents, student, parish in a timely manner.

STEP 3 – COMMUNICATE MEASURES, PRACTICES, POLICIES

To ensure everyone that enters St. Joseph the Worker School receives information about our measures, practices, and policies we have instituted the following:

- Provided all employees with information of Policy 310 (Employee Leaves of Absence) and local school policies, re: staying home when sick.
- Posted signage on entry doors and throughout the interior of the school to support the measures we have in place
- Provided information to make sure all stakeholders are knowledgeable about the practices that are in place at our school. Parent meetings at the beginning of the year, email communication, etc.
- All workers are aware of the policy for staying home when sick.
- We have posted signage in the school, including effective hygiene practices.
- We have posted signage at the main entrances indicating who is restricted from entering the premises, including visitors and workers with communicable disease symptoms.
- Administrators have been trained on monitoring workers and the workplace to ensure policies and procedures are being followed.
- Communication with staff is conducted through on-site meetings, emails, WhatsApp group chat messages, and staff meetings.
- Train staff on workplace policies and procedures:
 - Administration will field questions and concerns about the Communicable Disease Plan and adjust if needed
 - Changes/adjustments to the Communicable Disease Plan will be updated accordingly and communicated to all stakeholders.
 - Communicable Disease Plan is posted to the school website.
- All workers received information about staying home when sick
- All staff are required to complete a daily health check to assess for symptoms of communicable disease.
- Signs have been posted to restrict entrance of people to the building if showing symptoms

- Administration will monitor safety measures in the school.
- Regular communication with staff
- Administration will send staff regular emails regarding updates to policies, procedures, ministry documents or developments from Vancouver Coastal Health
- Records will be kept of inspections, cleaning schedules, health reports, etc.

STEP 4 – MONITOR YOUR WORKPLACE AND UPDATE PLANS AS NECESSARY

- New areas of concern will be monitored and identified, and adjusted as necessary.
- Procedures and policies will be updated as necessary.
- Protocol is in place so workers know who to go to with health and safety concerns.
- When resolving safety issues, proper authorities (MoE, Provincial Health Officer, WorkSafe) will be consulted.
- Administration will review Communicable Disease Plan regularly and update as needed